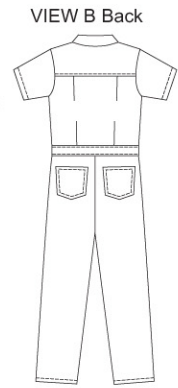
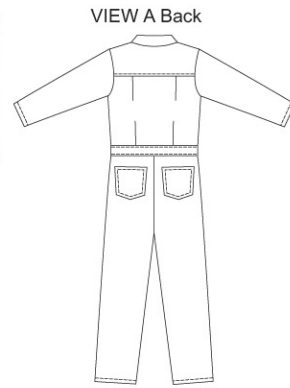




Men's coveralls are sized to be worn over clothes. They have extended shoulders, hidden front zipper and snap at top, inset waistband, tucks on back, yoke, collar, side pockets, breast and back patch pockets, and side slits to access inside pockets. View A has full-length sleeves, and View B has short sleeves.



KWIK·SEW®
3389 price

MEN'S COVERALLS
 Sizes: S-M-L-XL-XXL

DESIGNED FOR MEDIUM TO HEAVYWEIGHT WOVEN FABRICS
 Suggested Fabrics: Denim, twill, poplin, chino

Size	S	M	L	XL	XXL	
Finished Inside Leg Seam	29" (74 cm) – All Sizes					
View A & B	29" (74 cm) – All Sizes					
Material Required: Fabric requirement allows for nap, one-way design or shading. Extra fabric may be needed to match design or for shrinkage.						
Fabric 60" (152 cm) Wide						
View A	3 7/8 (3.55)	4 (3.70)	4 1/8 (3.80)	4 3/8 (4.00)	4 5/8 (4.25)	yd (m)
View B	3 3/8 (3.10)	3 1/2 (3.20)	3 3/4 (3.45)	4 (3.70)	4 1/4 (3.90)	yd (m)
Fabric 45" (115 cm) Wide						
View A	5 1/8 (4.70)	5 1/4 (4.80)	5 3/8 (4.95)	5 1/2 (5.05)	6 (5.50)	yd (m)
View B	4 5/8 (4.25)	4 3/4 (4.35)	4 7/8 (4.50)	5 (4.60)	5 1/4 (4.80)	yd (m)
Pocket Lining 32" (80 cm) Wide (minimum width)						
View A or B	1/2 (0.50)	1/2 (0.50)	1/2 (0.50)	1/2 (0.50)	1/2 (0.50)	yd (m)
Fusible Interfacing 24" (60 cm) Wide						
View A or B	1/4 (0.25)	1/4 (0.25)	1/4 (0.25)	1/4 (0.25)	1/4 (0.25)	yd (m)
Notions: Thread, one snap, one zipper – 18" (45 cm) for sizes S-M-L; 20" (50 cm) for sizes XL-XXL.						